




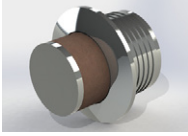












MARINE REFIT SUPPLEMENT

1st edition



THE FITTING CHOICE

	Combination & Recess Leather Door Levers	3
	Solid Door Levers	3
	Combination & Recess Amalfine Door Levers	4
	Turn & Release sets and Escutcheons	4
	Small T-bar Handles	5
	T-bar Mortice Handles	5
	Flush Push Buttons	6
	Push Button Lux Latches & Espagnolettes	6
	Savile Leather Push Button Cabinet Handles	8
	Solid Push Button Cabinet Handles	8
	Recess Leather Cabinet Handles	9
	Solid Cabinet Handles	9
	Strap Leather Cabinet Handles	10
	Amalfine Cabinet Handles	10
	Pocket Sliding Door Handles	11
	Fiddle Rails	12
	Full Range and Custom Products	13



Introduction.

Turnstyle Designs was formed in 1992 and has been specializing in making interior hardware fittings for the marine trade for since 1998.

All our products are made in the UK by a team of highly skilled craftsmen and engineers working in a broad choice of materials, from precision engineered brasswork to hand stitched leather.

This supplement brochure works in conjunction with all our other products shown on our website, and is a tailored selection from our extensive range that can be provided at short notice.

Production and manufacturing has been streamlined, allowing a 1-4 week lead time. This new improved lead time should allow owners, project managers and captains to look with confidence to Turnstyle Designs.

Our dedicated marine team are on hand to assist project manage your requirements, the more we know about your project the more we can help.



All copyright, design right and other intellectual property rights in our products and designs are and remain the property of Turnstyle Designs.

© Turnstyle Designs 2013



combination & recess leather door levers

Hand stitched leather grips on solid brass shafts.

Shown on 52mm round and square roses in rich Chestnut leather and Satin Nickel



Tube (stitch out) C1012
P x L (mm): 65 x 115
P x L (in): 2 19/32 x 4 17/32



Barrel (stitch out) R1024
P x L (mm): 60 x 124
P x L (in): 2 3/8 x 4 7/8



Goose Neck Tube (stitch in) CF1000
P x L (mm): 68 x 121
P x L (in): 2 11/16 x 4 25/32



Square (stitch in) R1021
P x L (mm): 62 x 127
P x L (in): 2 7/16 x 5

Plated Finishes (Fast Delivery)



Grip Finishes (Fast Delivery)



Ski R1022
P x L (mm): 60 x 112
P x L (in): 2 3/8 x 4 13/32

solid door levers

Solid single material brass door levers, to co-ordinate with leather or Amalfine™ door levers.

Shown here on both square and round roses in Satin Nickel.



Tube S1332
P x L (mm): 64 x 115
P x L (in): 2 17/32 x 4 17/32



Barrel S1333
P x L (mm): 60 x 124
P x L (in): 2 3/8 x 4 7/8



Goose Neck Tube SF1332
P x L (mm): 70 x 125
P x L (in): 2 3/4 x 4 15/16



Square S1526
P x L (mm): 60 x 125
P x L (in): 2 3/8 x 4 15/16

Plated Finishes (Fast Delivery)



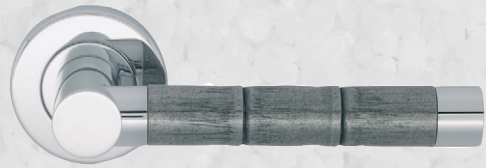
Ski S1022
P x L (mm): 60 x 112
P x L (in): 2 3/8 x 4 13/32

combination & recess Amalfine™ door levers

Beautiful hand cast lever grips set on elegantly waisted shafts, contemporary but versatile.
Shown on 52mm round roses
Recess set flush within 19mm brassware.



Shagreen Tube D2005
P x L (mm): 64 x 116
P x L (in): 2 17/32 x 4 9/16



Bamboo Barrel P2856
P x L (mm): 60 x 124
P x L (in): 2 3/8 x 4 7/8



Goose Neck Bamboo DF1001
P x L (mm): 71 x 121
P x L (in): 2 25/32 x 4 25/32

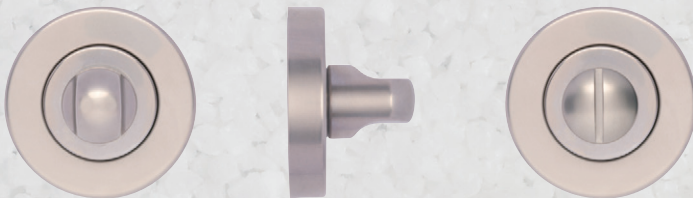


Shagreen P1019
P x L (mm): 60 x 124
P x L (in): 2 3/8 x 4 7/8

turn & release sets and escutcheons

Hand crafted hardware to allow you to match your range.

Round turn and release set



Snib turn and release set S1041
Rose dia. 52mm (2 3/64")

Round escutcheon



Euro S1421
Dia x P (mm): 52 x 10
Dia x P (in): 2 3/64 x 13/32

Square turn and release set



Half moon turn and release set S1420
Rose W x H 52 x 52mm (2 3/64" x 2 3/64")

Square escutcheon



Euro S1424
H x W x P (mm): 52 x 52 x 10
H x W x P (in): 2 3/64 x 2 3/64 x 13/32

Plated Finishes (Fast Delivery)



BRIGHT CHROME (BC)
SATIN NICKEL (SN)
POLISHED NICKEL (PN)

Amalfine Finishes (Fast Delivery)



BLACK BRONZE (BB)
COCOA (CO)
BONE (BN)
ALUPEWT (AP)
SAND (SA)

small T-bar handles

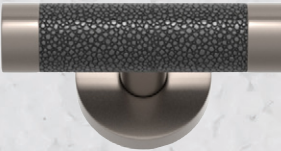
Various grip designs available turning on a 5mm square spindle or fixed dead.



**Small T-Bar
Rough Cut**
Turning: P1013
Fixed: P1013 - FD



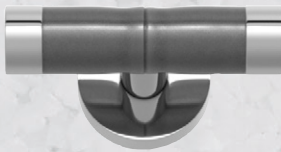
**Small T-Bar
Solid Barrel**
Turning: S1003
Fixed: S1003 - FD



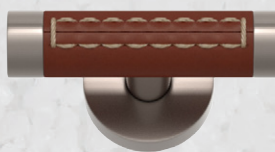
**Small T-Bar
Shagreen**
Turning: P3016
Fixed: P3016 - FD



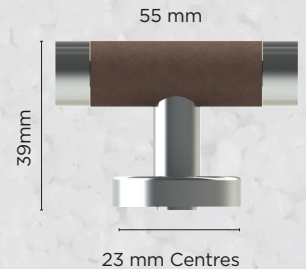
**Small T-Bar
Recess Leather
Barrel Stitch In**
Turning: R1027
Fixed: R1027 - FD



**Small T-Bar
Recess Amalfine
Bamboo**
Turning: P1012
Fixed: P1012 - FD



**Small T-Bar
Recess Leather
Barrel Stitch Out** Turning:
R1026
Fixed: R1026 - FD



Barrel - side view

T-bar mortice handles

Various grip designs available on the following roses, sprung or unsprung, suitable for cupboards, doors and windows. Comes with 8mm spindle or 5mm converter.



**Combination
Leather
Tube (stitch out)**
C1290



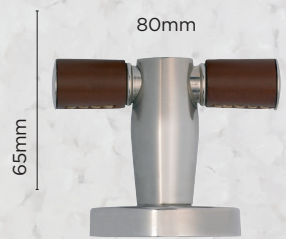
Solid Tube S1686



**Combination
Amalfine™
Shagreen** D2584



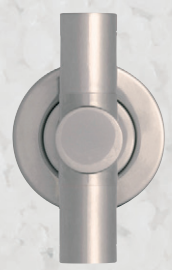
**Combination
Amalfine™
Bamboo** D1291



Tube - side view



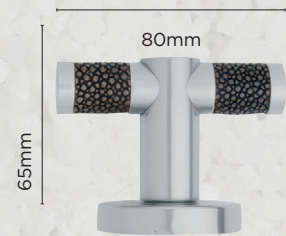
**Recess Leather Barrel
(stitch in)** R1913



Solid Barrel S2017



**Recess Amalfine™
Shagreen** P1912



Barrel - side view

Plated Finishes (Fast Delivery)



BRIGHT CHROME (BC) **SATIN NICKEL (SN)** **POLISHED NICKEL (PN)**

Amalfine Finishes (Fast Delivery)



BLACK BRONZE (BB) **COCOA (CO)** **BONE (BN)** **ALUPEWT (AP)** **SAND (SA)**

Grip Finishes (Fast Delivery)



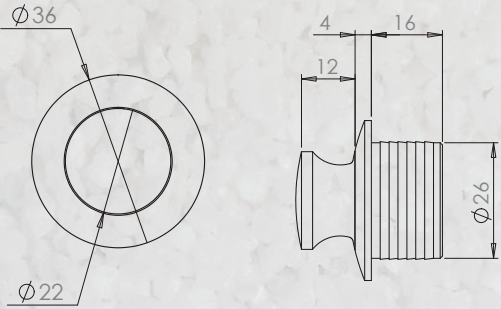
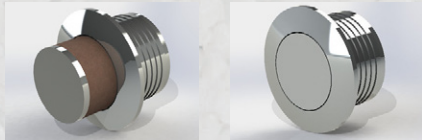
TAN (TN) **CHESTNUT (CN)** **CHOCOLATE (CT)** **BLACK (BL)** **GREY CHARCOAL (GC)**

For full technical specifications contact our sales department or visit www.turnstyledesigns.com

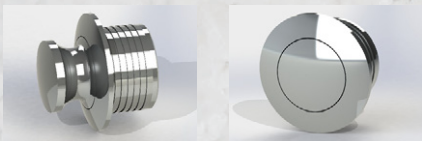
flush push buttons

Compatible with Lux Push Button Latch. (See Below)

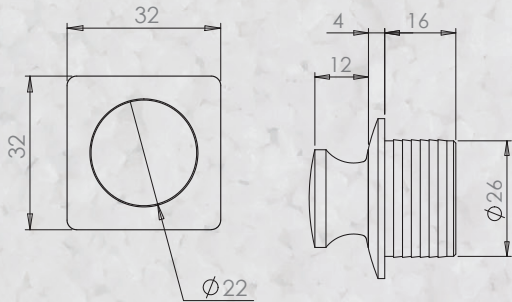
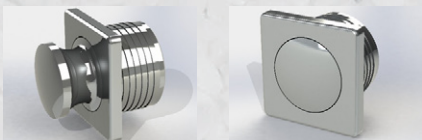
Button - Barrel Round Recess Leather
Rose - Domed Round R2986



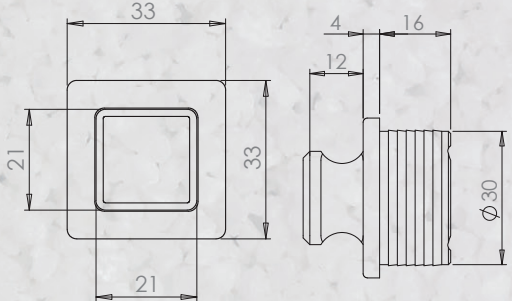
Button - Domed Round Solid
Rose - Domed Round S3044



Button - Domed Round Solid
Rose - Soft Square S3045



Button - Chamfer Square Solid
Rose - Soft Square S3049



Plated Finishes (Fast Delivery)



Grip Finishes (Fast Delivery)



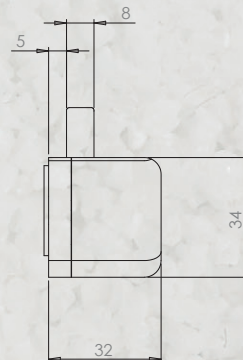
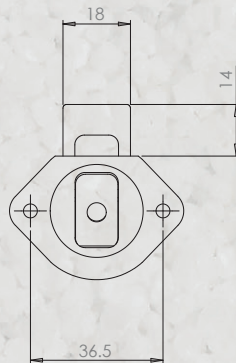
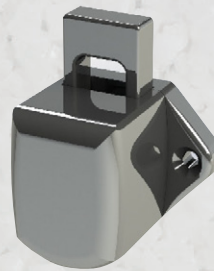
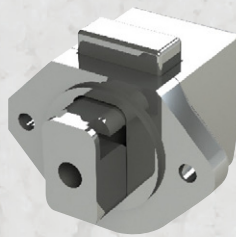
Note: All knob designs are available with round rose and will function with lux latches (below).

push button lux latch



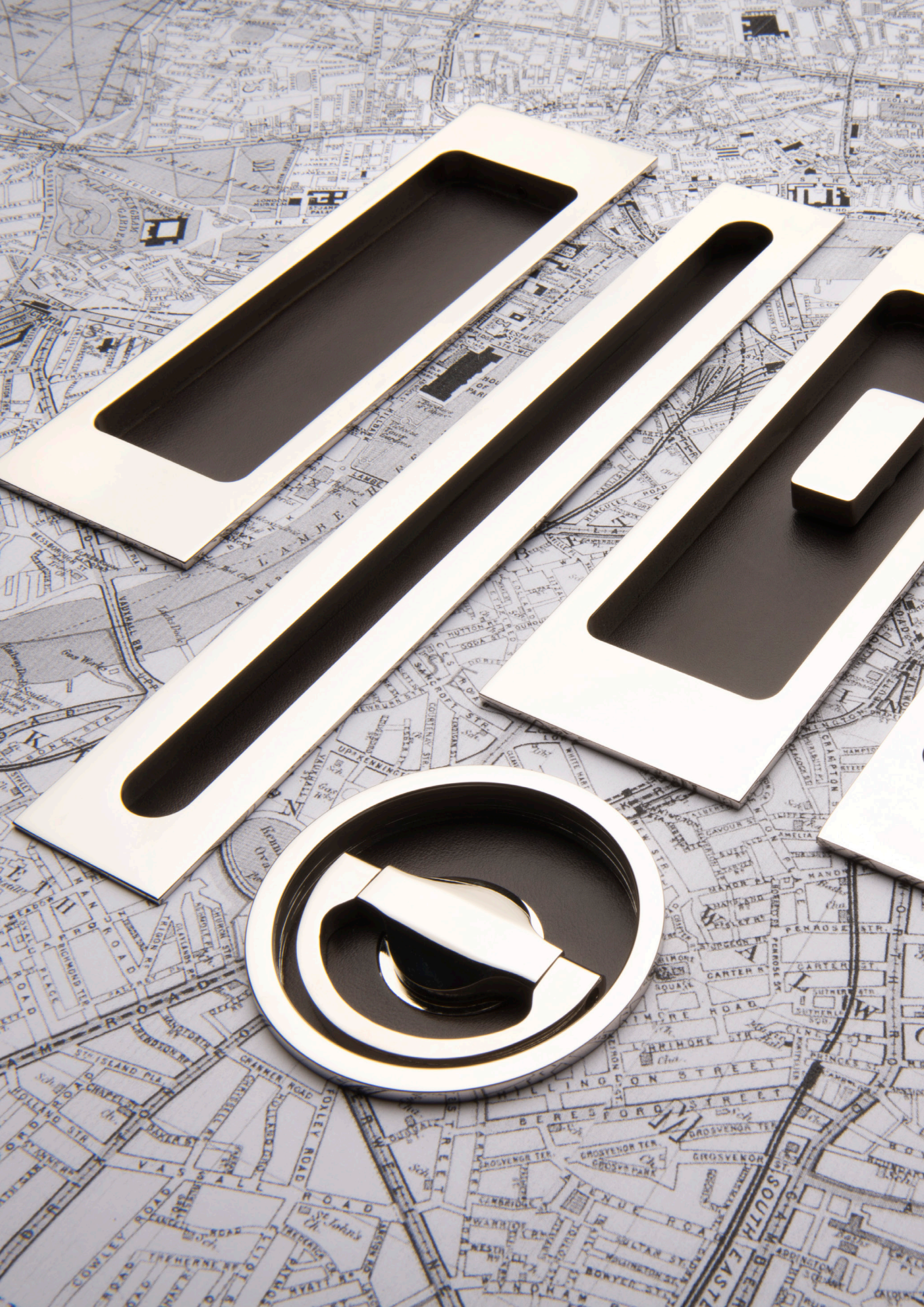
Push Button Lux Latch
K3002

Precision engineered, solid brass push button latch. What the Superyacht market has been asking for is finally here. Quiet action, solid positive latching, reliable and guaranteed. Only available with a wide choice of push buttons see above.



Plated Finishes (Fast Delivery)





push button cabinet handles

Hand stitched leather pulls fitted with Turnstyle quality, brass slam latch mechanism or plastic push to lock latch

Button, latch and keep plated to match

Shown in Tan leather and Polished Nickel buttons



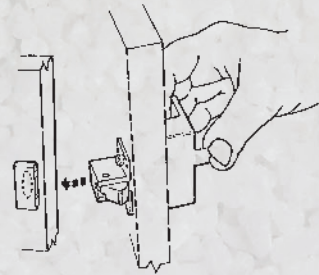
Large Wave H2221

L x P x W (mm): 235 x 29 x 50
L x P x W (in): 9 1/4 x 1 5/32 x 1 31/32



Small Wave H1948

L x P x W (mm): 50 x 22 x 50
L x P x W (in): 1 31/32 x 7/8 x 31/32



Latch options

Sprung Latch and Stop/Keep



Solid brass, with brass stop/keep. Simple to fit, durable, quiet and reliable. Operates by pushing to release, automatically latches on closing.

Savile Lift & Pull Cabinet Handles

Suitable for case thickness of 10 to 25mm

Simple one hand operation



Circle H2010

Dia x P (mm): 38 x 6
Dia x P (in): 1 1/2 x 1/4



Square H2009

L x P x W (mm): 40 x 6 x 40
L x P x W (in): 1 19/32 x 1/4 x 1 19/32



Recess Leather and Solid Push Button Cabinet Handles

Shown here in Chestnut and Satin Nickel



Ledge R1989

L x P x W (mm): 55 x 22 x 38
L x P x W (in): 2 3/16 x 7/8 x 1 1/2



Ledge S1989

L x P x W (mm): 55 x 22 x 38
L x P x W (in): 2 3/16 x 7/8 x 1 1/2



Dive R1990

L x P x W (mm): 75 x 22 x 34
L x P x W (in): 2 31/32 x 7/8 x 1 11/32



Dive S1990

L x P x W (mm): 75 x 22 x 34
L x P x W (in): 2 31/32 x 7/8 x 1 11/32

Plated Finishes (Fast Delivery)



BRIGHT CHROME (BC)

SATIN NICKEL (SN)

POLISHED NICKEL (PN)

Grip Finishes (Fast Delivery)



TAN (TN)

CHESTNUT (CN)

CHOCOLATE (CT)

BLACK (BL)

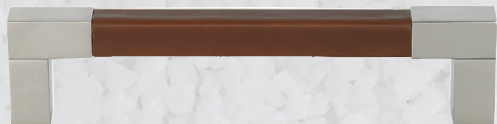
GREY CHARCOAL (GC)

recess leather & solid cabinet handles

CNC machined solid brass recessed with flush fitted bonded bridle leather D handles and Knobs to co-ordinate with range

Stitch in and out options available

Shown here in Chestnut leather and Satin Nickel



Square (stitch in) R1173

128 Centres 128mm

L x P (mm): 142 x 40

L x P (in): 5 19/32 x 1 9/16

160 Centres 160mm

L x P (mm): 174 x 40

L x P (in): 6 27/32 x 1 9/16

192 Centres 192mm

L x P (mm): 206 x 40

L x P (in): 8 1/8 x 1 9/16



Barrel (stitch out) R1910

96 Centres 96mm

L x P (mm): 135 x 31

L x P (in): 5 5/16 x 1 7/32

128 Centres 128mm

L x P (mm): 168 x 31

L x P (in): 6 5/8 x 1 7/32

160 Centres 160mm

L x P (mm): 200 x 31

L x P (in): 7 7/8 x 1 7/32

192 Centres 192mm

L x P (mm): 232 x 31

L x P (in): 9 1/8 x 1 7/32



Square R1200

L x P x W (mm): 40 x 19 x 40

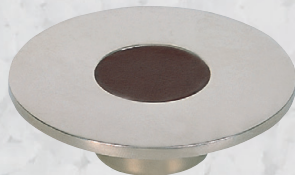
L x P x W (in): 1 19/32 x 3/4 x 1 19/32



Rectangle R1201

L x P x W (mm): 75 x 19 x 25

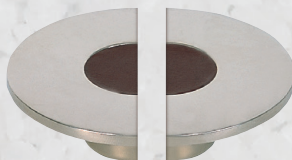
L x P x W (in): 2 31/32 x 3/4 x 1



Large Circle R1204

P x D (mm): 19 x 60

P x D (in): 3/4 x 2 3/8



Large Semi Circle R1205

L x P x W (mm): 60 x 19 x 30

L x P x W (in): 2 3/8 x 3/4 x 1 13/16



Large Circle S1204

P x D (mm): 19 x 60

P x D (in): 3/4 x 2 3/8



Small Circle S1202

P x D (mm): 19 x 34

P x D (in): 3/4 x 1 11/32



Barrel S1910

96 Centres 96mm

L x P (mm): 135 x 31

L x P (in): 5 5/16 x 1 7/32

128 Centres 128mm

L x P (mm): 168 x 31

L x P (in): 6 5/8 x 1 7/32

160 Centres 160mm

L x P (mm): 200 x 31

L x P (in): 7 7/8 x 1 7/32

192 Centres 192mm

L x P (mm): 232 x 31

L x P (in): 9 1/8 x 1 7/32

Plated Finishes (Fast Delivery)



BRIGHT
CHROME
(BC)

SATIN
NICKEL
(SN)

POLISHED
NICKEL
(PN)

Grip Finishes (Fast Delivery)



TAN
(TN)

CHESTNUT
(CN)

CHOCOLATE
(CT)

BLACK
(BL)

GREY
CHARCOAL
(GC)

strap leather & Amalfine™ cabinet handles

Bow, Button and Square range of strap handles, stitched or plain

Other sizes available

Shown here in Chestnut Leather and a range of finishes



Bow Button Large A1180
Centres 160mm L x P x W (mm): 186 x 26 x 25
L x P x W (in): 7 11/32 x 11/32 x 1



Bow Plain Large AP1180
Centres 160mm L x P x W (mm): 186 x 26 x 25
L x P x W (in): 7 11/32 x 11/32 x 1



Button (stitched) Large U1185
Centres 160mm L x P x W (mm): 200 x 26 x 25
L x P x W (in): 7 7/8 x 11/32 x 1



Button (unstitched) Large UP1185
Centres 160mm L x P x W (mm): 200 x 26 x 25
L x P x W (in): 7 7/8 x 11/32 x 1



Square (stitched) U1684
Centres 160mm L x P x W (mm): 190 x 26 x 30
L x P x W (in): 7 1/2 x 1 x 1 3/16



Square (unstitched) UP1684
Centres 160mm L x P x W (mm): 190 x 26 x 30
L x P x W (in): 7 1/2 x 1 x 1 3/16

Amalfine grip set between solid brass ends. All D handles have 128mm centres. Supplied with M4 x 30 bolts

Shown here in Cocoa and Polished Nickel



Shagreen Y1669
L x P (mm): 168 x 35
L x P (in): 6 5/8 x 1 3/8

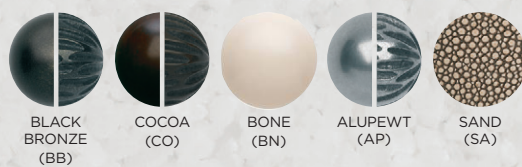


Bamboo Y2879
L x P (mm): 168 x 35
L x P (in): 6 5/8 x 1 3/8

Plated Finishes (Fast Delivery)



Amalfine Finishes (Fast Delivery)



Grip Finishes (Fast Delivery)



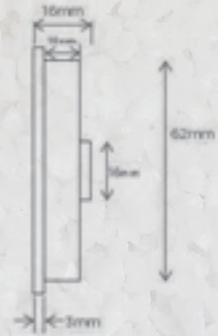
pocket sliding door hardware



Round Revolving Flush Pull - Recess Leather
C1954



Round Revolving Flush Pull - Solid S1954



Rectangular Flush Door Pulls - Solid - Plain S1955



Rectangular Flush Door Pulls - Solid - Turn S1955 - T03



Rectangular Flush Door Pulls - Solid - Release S1955 - T04



Slimline Rectangle Flush Pull
Leather: C1959
Solid: S1920



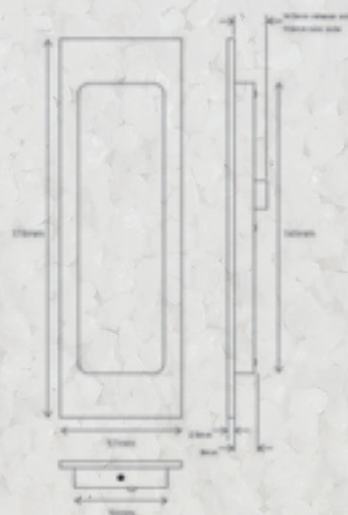
Rectangular Flush Door Pulls - Recess Leather - Plain
R1955



Rectangular Flush Door Pulls - Recess Leather - Turn
R1955 - T03



Rectangular Flush Door Pulls - Recess Leather - Release
R1955 - T04



Plated Finishes (Fast Delivery)



BRIGHT CHROME
(BC)

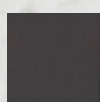


SATIN NICKEL
(SN)



POLISHED NICKEL
(PN)

Recess Finish (Fast Delivery)



Faux Leather - Black Tea
(BT)

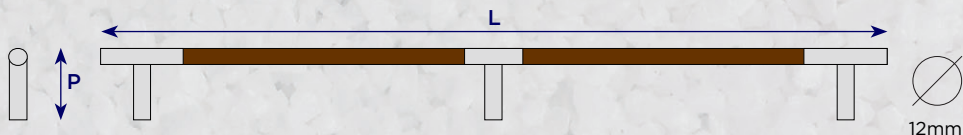
A selection of our fiddle rail designs.



Recess Leather - Barrel

Co-ordinates with Leather Barrel door levers and cabinet pulls

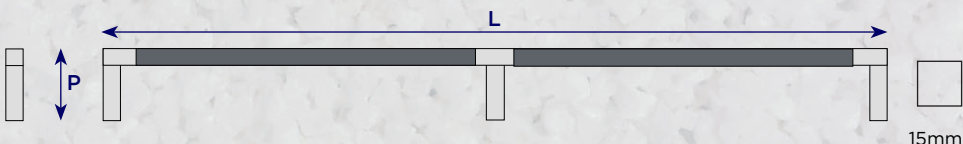
Projection (P) - 31mm Standard
(Custom projection also available)
Length o/a (L) - over 500mm requires additional stancion
Diameter



Recess Leather - Square

Co-ordinates with Recess Leather Square door levers and cabinet pulls

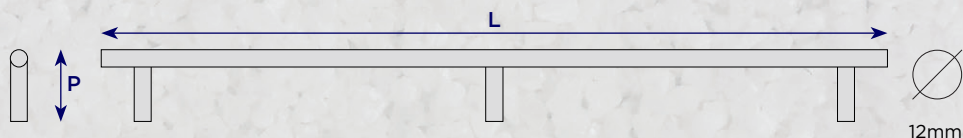
Projection (P) - 40mm Standard
(Custom projection also available)
Length o/a (L) - over 500mm requires additional stancion



Solid - Barrel

Co-ordinates with Solid range door levers

Projection (P) - 40mm Standard
Length o/a (L) - over 500mm requires additional stancion



Plated Finishes (Fast Delivery)



Grip Finishes (Fast Delivery)



full range and custom projects

Turnstyle Designs have a specialist marine team with over 30 years combined experience in the Super Yacht industry in the UK, Europe and USA. Our team can help project manage and follow up your requirements to fit to your timescales.

This supplement highlights the products in our range that can be ordered with 1 -4 week lead times. All our products are made to order by hand in the UK specific to your requirements. Improved manufacturing systems and processes have allowed this improvement over the last 18 months. With over 15 finish options on most products.

If you have more time then we can provide you with a wider range of options. Including free issued leather, custom finishes or pure custom design as time allows. Below are a few examples of custom projects.

We regularly work with owners designers, ship yards and are aware of the time constraints associated with re-commissioning yachts for the season. A dedicated and experienced team are available to review potential refit issues – in most cases there are very few technical issues with retrofitting levers on existing doors.

Below is a snapshot of refit projects successfully delivered.

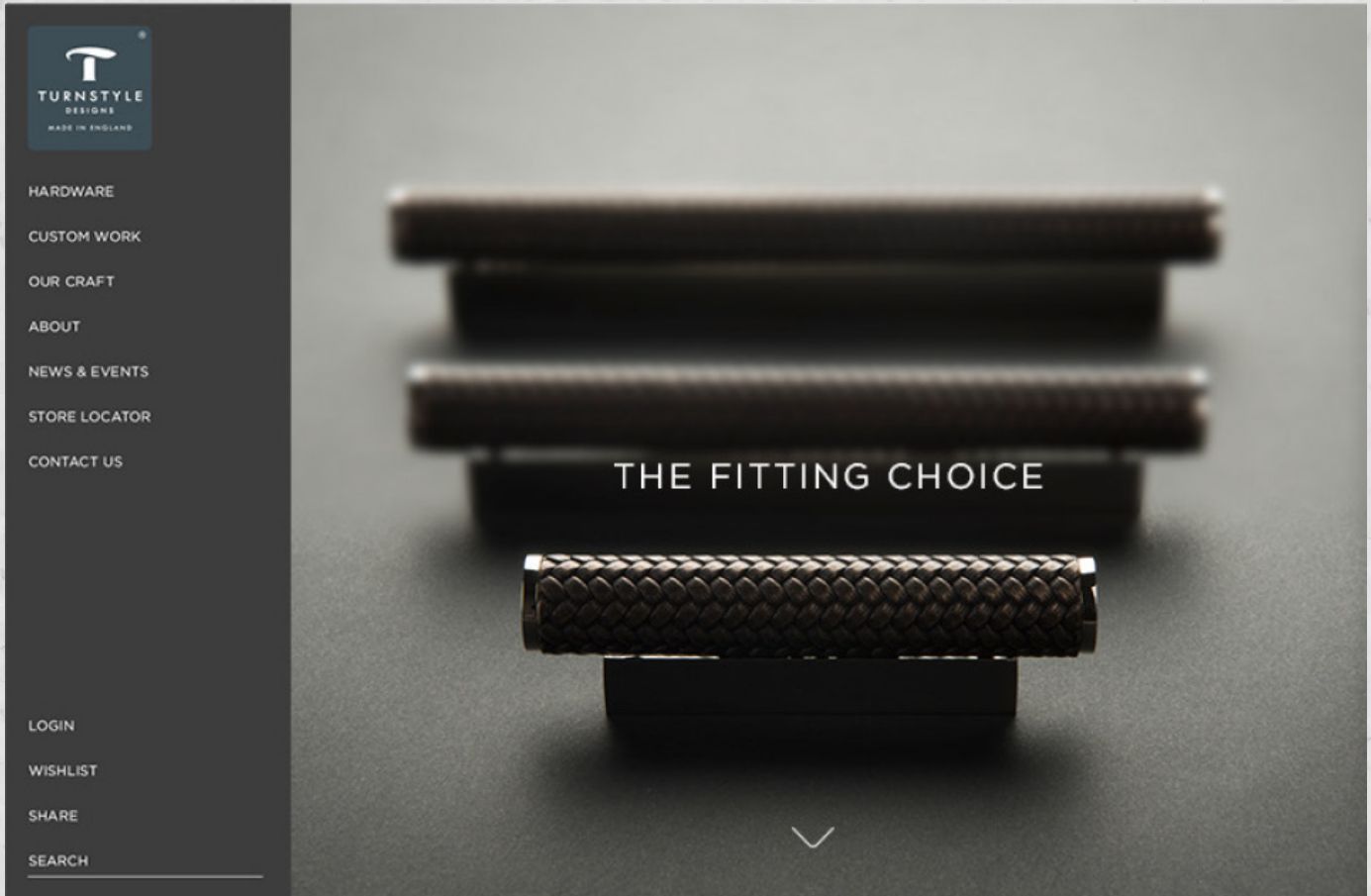
Name	Yard	Interior Design	Fitting Company	Size	Type	Launch Date
Odyssey (ex White Rabbit)	Feadship (refit)	Redman Whitely Dixon	In-house	38.10 metre	Motor Yacht	1989/2010
Indian Empress	Oceanco	Mark Berryman Design	Turquoise Yachts	95.00 metre	Motor Yacht	2015
SY Samurai	Husifit	Rhoades Young	Greenline Yacht Interiors	42.50 metre	Sailing Yacht	2015
Unknown	Refit	Christiano Gatto	Neiri	45.00 metre	Motor Yacht	2011
C9	Refit	Stirling & Co	DNC	60.00 metre	Motor Yacht	2016
Mirage	Refit	Design Unlimited	Oldenburger	TBA	Motor Yacht	2015
M5 (Ex Mari-Cha)	Pendennis	RWD	SYINZ	77.60 metre	Sailing Yacht	2014
Delta 70	Delta Marine	In-house	Belina	21.00 metre	Motor Yacht	2012



don't forget!

The marine refit supplement only shows a fraction of Turnstyle Designs' extensive product range. Please visit our website to view our full range.

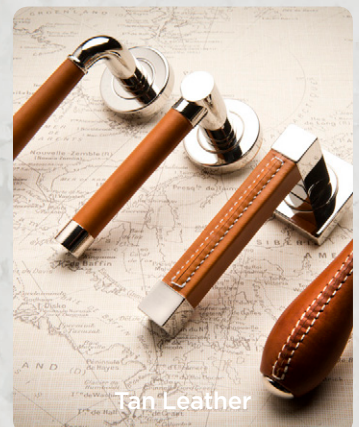
www.turnstyledesigns.co.uk



Black leather and VN Cabinet Pulls



Wire Door Levers



Tan Leather



Turnstyle Designs Ltd

Baron Way
Roundswell Business Park
Barnstaple
Devon EX31 3TB
England

Tel: +44 (0)1271 325325

Email: sales@turnstyledesigns.com

www.turnstyledesigns.com

Turnstyle Designs Ltd

Unit 103, First Floor
Design Centre East
Chelsea Harbour
Chelsea, London
England SW10 0XF

Tel: +44 (0)203 489 1040

Email: sales@turnstyledesigns.com

www.turnstyledesigns.com

